

Report of A. Beveridge in 5BBC, et al. v. City of New York, et al. (Amended 11-10-2008)

- I. I was asked by Plaintiffs' counsel in the above litigation to analyze summons data collected from the NYPD and report on the rates of summoning activity directed at bicyclists during the monthly Manhattan Critical Mass ride compared with rates of summoning activity on other days. My conclusions are based upon on my training and expertise in the fields of statistics and sociology and the data supplied by Plaintiffs' counsel, and are qualified by the caveats expressed in this Report. My conclusions may be summarized as follows:
1. I have reviewed data associated with over 15,000 NYPD bicycling-related summonses that were identified by Plaintiffs' counsel. In reviewing these data, I have focused on NYPD summoning activity associated with non-commercial bicycling (i.e., bicycling by private individuals rather than persons in the business of transporting goods or passengers for payment) in the 13th Precinct between 6 p.m. and 11 p.m. for the periods of (1) February 1, 2004 through February 1, 2008, and (2) February 1, 2006 through February 1, 2008. My understanding is that these two periods encompass the entire date range for which summonses were available, while the latter of the two periods reflects heightened summoning activity directed by NYPD at actual or suspected participants in Critical Mass.
 2. A non-commercial bicyclist riding within the 13th Precinct between 6 p.m. and 11 p.m. on the last Friday of each month for the period of February 1, 2006 through February 1, 2008 was approximately 337 times more likely to be issued a summons than such a bicyclist riding on any other evening in the month. For the period of February 1, 2006 through January 2008, a non-commercial bicyclist riding within the 13th Precinct between 6 p.m. and 11 p.m. on the last Friday of every month was approximately 169 times more likely to be issued a summons than such a bicyclist riding on any other Friday evening in the month.
 3. For certain bicycling-related traffic and equipment violations, the disparity in the rate of summoning associated with riding on Critical Mass evenings in the 13th Precinct in Manhattan was even greater than that observed for the overall group of summonses. For some offenses, no or virtually no summonses were given other than on Critical Mass evenings in Manhattan for the period of February 1, 2006 through February 1, 2008.
 4. The pattern of NYPD summoning activity with respect to alleged bicycling-related violations observed in these data does not reflect a random distribution of summoning activity and cannot be attributed to chance. Rather, it appears that beginning in February 2006, NYPD engaged in a focused effort to enforce the law in an extraordinary manner against non-

commercial bicyclists in the 13th precinct on the last Friday of the month between the hours of 6 p.m. and 11 p.m.

5. Based upon my past experience analyzing statistical trends related to behavioral patterns and urban demographics, the grossly disproportionate rates of summoning of non-commercial bicyclists involved in or bicycling near the monthly Manhattan Critical Mass rides, as compared to that observed for other non-commercial bicyclists, strongly indicate a program to target Critical Mass for enforcement of laws. Indeed, some of these bicycling-related laws do not appear to be the subject of significant NYPD enforcement efforts at all except in connection with Critical Mass.

II. I base my analysis on the data and other information received from Plaintiffs' counsel and my training and experience as a statistician.

1. I am a Professor of Sociology at Queens College and the Graduate Center, City University of New York. My primary responsibilities at the College and Graduate Center are teaching statistics and research methods at the graduate and undergraduate level and conducting quantitative, statistically-based social research. Trained at Yale University, I have been employed in such a capacity since 1973, first at Columbia University until 1981 and since then at Queens College and the Graduate Center of CUNY. I currently am serving a three-year term as chair of the sociology department at Queens. My areas of expertise include demography, the statistical and quantitative analysis of social science data sets, most particularly including Census data, survey data and administrative records. I have published results from my research. I have listed my scholarly publications on my résumé, which is attached as Exhibit A. Some of these results served as the basis of articles in the *New York Times*, where I serve as a demographic consultant through an agreement between the CUNY Research Foundation and the *Times*. In addition, I publish a regular column on demographic topics in the *Gotham Gazette*, an on-line publication of Citizens Union. I have served as a consultant to a number of public and private entities, to which I provide services related to demographic analysis in the area of housing, among other things.
2. I have testified as an expert in demographic and statistical analysis in the following cases among others, including affidavit testimony and the filing of reports: *United States vs. Port Chester*, (Report, Three Declarations, Deposition and Hearing Testimony, 2002—present, Southern District of New York, cited in preliminary injunction ruling and opinion); *Martinez v. Kelly* (Declaration filed in Second Circuit Court of Appeals re: Peremptory Jury Strikes, 2006); *Commonwealth of Virginia vs. Portillo-Chicas* (Affidavit, 2006, Stafford County Virginia); *Commonwealth of Virginia vs.*

Rogers (Report and Testimony, 2006, Stafford County Virginia); *United States v. Margaret Torres* (Declaration, 2006, Eastern District of Louisiana); *United States v. Caldwell* (Declaration, 2006, Eastern District of Louisiana); *United States vs. Darryl Green, et al.* (Seven Declaration and Trial Testimony 2004-2006, Eastern Division of the District of Massachusetts, cited in the court's opinion); *Bergen Lanning Residents in Action, et al. vs. "Randy" Primus, et al.* (Report re: Bergen Square Redevelopment in Camden, NJ. 2005, Camden County, New Jersey); *Cramer Hill Residents Association, et al. vs. Melvin R "Randy" Primus, et al.* (Report re: Cramer Hill Redevelopment in Camden, New Jersey 2005, Camden County, NJ); *People v. Tyisha Taylor* (Trial Testimony, 2005, Syracuse, New York City Civil Court); *Hispanic Alliance vs. Ventnor* (Report, Certification and Testimony at Trial, 2004 to 2005, Atlantic County, New Jersey); *Citizens in Action, et al. vs. Town of Mount Holly, et al.* (Report and Certification, 2005, Burlington County, New Jersey); *United States v. Skiba*, (Affirmation, 2004, Pittsburgh Division, Western District of Pennsylvania); *Connie Forest, et al. vs. Mel Martinez, et al.* (Report re: Brick Towers Demolition in Newark. 2003-2006, Essex County, New Jersey); *New Rochelle Voters Rights Defense Fund v. City of New Rochelle* (Report and Testimony, 2003, Southern District of New York, cited in the opinion); *People v. Sweat* (Affidavits, 2003, Broome County, New Jersey); *Montano v. Suffolk County Legislature* (Declaration and Testimony, 2003, Eastern District of New York, cited in the court's opinion); *Rodriguez v. Pataki* (Declaration, Report, and Deposition and Trial Testimony, 2002-2003, Combined Second Circuit, Southern District of New York Panel, cited in the court's opinion); *Hines vs. Charleston Missouri Housing Authority* (Report and Testimony at Trial, 2002 to 2003, Eastern District of Missouri, analysis cited in opinion); *Reese, et al. vs. Miami-Dade County, et al.* (Report and Testimony at Hearing, 2001 to 2002, Southern District of Florida). Cases and testimony are listed in my résumé attached as Exhibit A.

3. I considered the following materials in forming my opinions and preparing this report:
 - (a) Materials and Data considered:
 - (i) A spreadsheet of summons data collected from NYPD indicating information such as summons number, date of offense, time of offense, precinct where issued, and violation number.
 - (ii) .tif images of all summonses referenced within the spreadsheet.
 - (iii) An explanation of the activities prohibited by each violation number indicated on the spreadsheet.

- (iv) An explanation of which violation numbers applied exclusively to commercial bicyclists and pedicab operators.
- (v) Plaintiffs' Amended Complaint in this litigation.
- (vi) Declarations of Stuart Desser (supplemental), Peter Engel, and Gideon Orion Oliver.
- (vii) Deposition testimony of Edward DeFreitas, Josh Gosciak, Kenneth Jackson, Sharon Blythe, Peter Engel, Jim Zisfein, and Madeline Nelson.
- (viii) A press release issued by the New York City Department of Transportation ("DOT") dated October 30, 2008, and available from its website at http://www.nyc.gov/html/dot/html/pr2008/pr08_047.shtml.
- (ix) Video documents produced in this litigation with designations 5BBCVID000012 and 5BBCVID000013.
- (x) Data regarding baseline bicycling levels published by the DOT and available from its website at <http://www.nyc.gov/html/dot/html/bicyclists/nycbicyclescrct.shtml>.

(b) The following data collection methods were used:

- (i) All "B" and "C" summonses from January 2004 through early 2008 were reviewed at certain NYPD precincts to the extent made available by Defendants. "B" and "C" summonses in certain other precincts, in which NYPD reports indicated significantly increased bicycling-related summoning activity over baseline levels, were also reviewed. Bicycling-related summonses were identified based upon the description of the offense and/or the section and subsection allegedly violated as indicated on the face of each summons. Each bicycling-related summons was ultimately produced by the Defendants.
- (ii) All reasonable doubts were resolved in favor of identifying a summons as bicycling-related. If a summons cited a law aimed at bicycling as well as inline skating, roller skating, or skateboarding (e.g. VTL 1233-1235) and the summons did not explicitly mention whether or not it was issued to a bicyclist, the summons would be treated as bicycling-related.

- (iii) If a summons cited a violation number that did not exist or was inapplicable to bicycling (e.g. NYCAC 19-176.1) but the description on the face of the summons indicated that the summons was directed at a bicyclist, the summons would be treated as bicycling-related.
 - (iv) A relatively small set of summonses was produced by defendants apart from the process described above, based upon NYPD's own collection of summonses allegedly issued during Manhattan Critical Mass rides, and those summonses were also considered in my analysis.
- (c) The following data coding method was used:
- (i) Summonses were coded for the following variables: date, time, summons number, officer I.D. number, violation section and subsection, description of violation, last Friday of the month, precinct, pedicab vs. bicycle, commercial vs. non-commercial bicyclist, and duplicate vs. non-duplicate
 - (ii) All reasonable doubts were resolved in favor of treating a summons as a non-commercial violation. A summons was coded as involving commercial bicycling only if it explicitly mentioned a commercial delivery, involvement of a pedicab, or some other commercial function on its face, or if the summons cited a violation of a provision of law applicable solely to commercial bicyclists or pedicabs.
 - (iii) If a summons cited the violation of a provision of law that is applicable to both commercial and non-commercial bicyclists (e.g. VTL 1235: Carrying articles), but the summons did not explicitly indicate that the offender was a commercial bicyclist or pedicab operator, the summons would be coded as non-commercial summons.
 - (iv) Approximately 1,300 bicycling-related summonses could not be coded for the particular violation or other alleged variables due to illegible or missing data on the summons, or the difficulty in interpreting the data on the summons. These summonses are included in my overall analysis as non-commercial bicycling-related summonses, but are excluded from my analyses addressing particular violations.

III. Methods used to analyze the data:

- A. Exclusion of commercial summonses (delivery people and pedicabs) from the basic analyses.
 - 1. There are different public safety, convenience, and legal concerns raised by commercial bicycling. Commercial bicyclists are subject to specific regulations inapplicable to other bicyclists (see NYCAC 10-157) and pedicabs are subject to equipment requirements that by their very nature are inapplicable to other bicyclists (e.g. requirement of two working taillights).
 - 2. Analysis of summoning activity involving commercial bicycling indicates:
 - (a) there is higher background level in summoning than for non-commercial bicycling; and
 - (b) there is no precinct, other than the 13th, with massive spikes in summoning activity on particular days of the month.
- B. All summonses were presumed to be valid.
 - 1. My understanding is that many of these summonses have been dismissed, some because they were issued for alleged violations of laws that are not in effect in New York City (e.g., VTL §1234). My analysis does not discount any summonses based upon such defects, nor did I consider the actual disposition of any summonses.
 - 2. If a violation section appears inapplicable to bicycling (e.g. NYCAC Section 19-176.1), but it was clearly issued to a bicyclist, it was treated the same as a validly-issued summons.

IV. Detailed results of analysis:

- A. Several basic analyses were performed using the data provided to me by Plaintiffs' attorneys. These include the comparison of the number of summonses issued during Critical Mass Manhattan evenings with the number issued during all other evenings, in the 13th and in other precincts. I conducted a similar comparison regarding the Brooklyn Critical Mass evenings (the second Friday of each month, 6 p.m. to 11 p.m.). The results of each analysis, which are summarized in paragraphs I-2 and I-3 above and presented in the accompanying tables, plainly show that there is an extremely disproportionate number of summonses issued in the 13th Precinct during the times and dates of the Manhattan Critical Mass rides.
- B. Summonses issued on Critical Mass nights are defined as those issued on the last Friday of each month, between 6 p.m. and 11 p.m. Information on some 11,330

summonses was complete for the period from February 1, 2004 through February 1, 2008. Information on those summonses is presented in Table 1. As is plain from that table, very few commercial summonses were given in the 13th Precinct, where the Manhattan Critical Mass rides occur. Furthermore, it is also obvious that a substantial increase in bicycling-related summonsing activity occurred in the second period, from February 1, 2006 through February 1, 2008. Accordingly, the main focus of the analysis is on non-commercial summonses issued during that period.

- C. To assess the pattern of summonsing, two sets of comparisons were used with respect to Precinct 13 and other precincts for the non-commercial summons issued during the period. Detailed raw counts of summonsing activity by precinct are presented in Table 2. Three periods are used: All day, Any Day; Any Day, 6 P.M. to 11 P.M.; and Fridays 6.P.M. to 11 P.M.
1. From Table 2 one can see that some 460 total summonses were issued for non-commercial violations in the 13th Precinct from February 1, 2006 through February 1, 2008. Of these, 378 were issued on the last Friday of a month, and the other 82 were issued on other days.
 2. Considering only summonses issued between 6 P.M. to 11 P.M., 355 summonses were issued during the last Friday of the month, while 31 were issued on other days during the two-year period ending February 1, 2008. The total number of days under consideration is 731, and the number of Critical Mass ride days under consideration is 24. This means that 31 summonses were issued during 683 days (the non-Critical Mass Ride days), while 355 summonses were issued during 24 Critical Mass Ride days. Thus, summons were issued during the Critical Mass Ride days at a rate 337 times greater than on other days.
 3. Considering only summonses issued between 6 P.M. to 11 P.M. on a Friday, there were 355 summonses given during the 24 Critical Mass Ride Friday evenings, and seven summonses given during the 80 other Friday evenings during the two-year period ending February 1, 2008. This means that summons were issued during the Critical Mass Ride Friday evenings at a rate 169 times greater than on all other Friday evenings. I believe that an analysis comparing summonsing activity on Critical Mass Friday evenings to such activity on other Friday evenings is the most appropriate comparison of the three presented, because it eliminates as potential confounding factors any differences in bicycling activity that may be associated with different times of day or days of the week.
- D. To address the possibility that an increase in the number of bicyclists on Critical Mass evenings was skewing the results of the analysis, I considered the New York

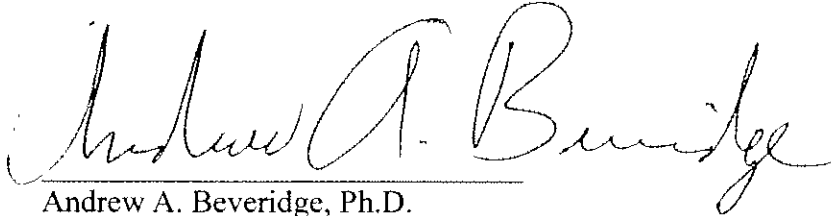
City DOT “screenline” counts of bicyclists. It should be noted that the underlying number of bicyclists observed by the New York City DOT is drawn from an estimate for all of Manhattan. The New York City DOT data indicate that the number of bicyclists in Manhattan on weekdays is sufficiently large that only an increase on the order of fifty fold or higher on the nights that Critical Mass rides would affect the basic findings.

- E. I also analyzed certain specific violations at the request of Plaintiffs’ counsel; these analyses are shown in Tables 3, 4 and 5.
 - 1. With regard to riding outside a bicycle lane (34 R.C.N.Y. § 4-12(p)(1)), under the preferred analysis all summonses issued for such violations in the 13th Precinct were issued on Manhattan Critical Mass Friday evenings, as shown in Table 3.
 - 2. With regard to bicycling without the requisite lighting equipment (V.T.L. § 1236(a)), under the preferred analysis all summonses issued for such violations in the 13th Precinct were issued on Manhattan Critical Mass Friday evenings, as shown in Table 4.
 - 3. With regard to bicycling-related violations of P.L. 240.20(5) (disorderly conduct), under the preferred analysis all summonses issued for such violations in the 13th Precinct were issued on Manhattan Critical Mass Friday evenings, as shown in Table 5.
 - F. The pattern that I have found in terms of non-commercial, non-pedicab summonses issued in the 13th Precinct during Critical Mass evenings compared to such summonses issued during other times and/or in other precincts is consistent with the other evidence provided to me by Plaintiffs’ counsel, including deposition testimony, declarations, video footage and DOT materials.
 - G. I have checked the data and its coding for a sample of cases, and I have reviewed a small number of data anomalies found, including summonses with data that are missing, illegible or difficult to interpret. These anomalies comprise less than ten percent of the summonses. These summonses, along with those that had a time or date or violation completely missing, were excluded from my analysis.
- V. Compensation for services as an expert:
- 1. I am being paid \$200 per hour plus expenses, including my programmer, who worked under my direction and assisted me, is paid \$60 per hour.
 - 2. Accrued fees as of November 10, 2008, approximately \$8,000.

REPRESENTATION

The foregoing is based upon my experience and qualifications as a social science and statistical data analyst utilizing data from the sources indicated.

Respectfully submitted,

A handwritten signature in cursive script that reads "Andrew A. Beveridge". The signature is written in black ink and is positioned above a horizontal line.

Andrew A. Beveridge, Ph.D.

November 10, 2008

Yonkers, NY

Table 1. Number of Bicycling-Related Summonses by Non-Commercial vs. Commercial/Pedicab Status by Issuing Precinct

Precinct	Period--Jan 01, 2004 to Feb 01, 2008			Period--Jan 01, 2004 to Jan 31, 2006			Period--Feb 01, 2006 to Feb 01, 2008		
	Non-Commercial	Commercial	Total	Non-Commercial	Commercial	Total	Non-Commercial	Commercial	Total
1	8	0	8	0	0	0	8	0	8
6	15	0	15	0	0	0	15	0	15
7	1	3	4	0	0	0	1	3	4
9	73	0	73	0	0	0	73	0	73
10	8	0	8	0	0	0	8	0	8
11	2	0	2	0	0	0	2	0	2
13	615	15	630	152	14	166	463	1	464
14	1,179	23	1,202	393	1	394	786	22	808
15	8	0	8	0	0	0	8	0	8
16	2	0	2	0	0	0	2	0	2
17	255	1,800	2,055	3	3	6	252	1,797	2,049
18	14	4	18	0	0	0	14	4	18
19	1,586	1,839	3,425	440	423	863	1,146	1,416	2,562
20	322	278	600	1	0	1	321	278	599
22	370	0	370	146	0	146	224	0	224
24	261	91	352	0	0	0	261	91	352
25	3	0	3	0	0	0	3	0	3
27	0	0	0	0	0	0	0	0	0
61	1	0	1	0	0	0	1	0	1
70	3	0	3	0	0	0	3	0	3
71	276	0	276	0	0	0	276	0	276
75	2	0	2	0	0	0	2	0	2
77	1	0	1	0	0	0	1	0	1
78	218	0	218	116	0	116	102	0	102
83	1	0	1	0	0	0	1	0	1
90	1,680	0	1,680	930	0	930	750	0	750
91	1	0	1	1	0	1	0	0	0
94	336	1	337	98	0	98	238	1	239
103	1	0	1	0	0	0	1	0	1
110	1	0	1	0	0	0	1	0	1
N/A	30	0	30	10	0	10	20	0	20
OTH	3	0	3	0	0	0	3	0	3
Total	7,276	4,054	11,330	2,290	441	2,731	4,986	3,613	8,599
	526 Missing Cases			107 Missing Cases			419 Missing Cases		

Table 2. Number of Bicycling-Related, Non-Commercial, Non-Pedicab Summonses by Critical Mass Dates Feb 01, 2006 to Feb 01, 2008 By Issuing Precinct

Precinct	All Day, Any Day					6 P.M. to 11 P.M. Anyday					6 P.M. to 11 P.M. Fridays				
	Brooklyn CM Date	Manhattan CM Date	Non-CM Date	Total		Brooklyn CM Date	Manhattan CM Date	Non-CM Date	Total		Brooklyn CM Date	Manhattan CM Date	Non-CM Date	Total	
1	0	8	0	8		0	6	0	6		0	6	0	6	
6	0	15	0	15		0	15	0	15		0	15	0	15	
7	0	0	1	1		0	0	1	1		0	0	0	0	
9	0	3	70	73		0	3	43	46		0	3	11	14	
10	0	8	0	8		0	8	0	8		0	8	0	8	
11	0	0	2	2		0	0	1	1		0	0	0	0	
13	0	378	82	460		0	355	31	387		0	355	7	362	
14	0	148	637	785		0	109	292	403		0	109	39	148	
15	0	0	8	8		0	0	2	2		0	0	0	0	
16	0	1	1	2		0	1	1	2		0	1	0	1	
17	0	22	230	252		0	10	72	82		0	10	1	11	
18	0	12	2	14		0	11	1	12		0	11	0	11	
19	0	57	1,089	1,146		0	36	456	492		0	36	80	116	
20	0	27	294	321		0	12	90	102		0	12	13	25	
22	0	4	219	223		0	0	63	63		0	0	4	4	
24	0	22	239	261		0	10	100	110		0	10	9	19	
25	0	2	1	3		0	2	0	2		0	2	0	2	
61	0	0	1	1		0	0	1	1		0	0	1	1	
70	0	0	3	3		0	0	2	2		0	0	1	1	
71	1	0	275	276		0	0	112	112		0	0	14	14	
75	0	0	2	2		0	0	2	2		0	0	2	2	
77	0	0	1	1		0	0	0	0		0	0	0	0	
78	2	0	100	102		1	0	27	28		1	0	5	6	
83	0	0	1	1		0	0	0	0		0	0	0	0	
90	22	0	726	748		3	0	160	163		3	0	25	28	
94	16	0	221	237		3	0	55	58		3	0	4	7	
103	0	1	0	1		0	1	0	1		0	1	0	1	
110	0	1	0	1		0	1	0	1		0	1	0	1	
N/A	0	14	6	20		0	14	0	14		0	14	0	14	
OTH	0	1	2	3		0	0	0	0		0	0	0	0	
Total	41	724	4,213	4,978		7	594	1,512	2,116		7	594	216	817	

Table 4. Number of Bicycling-Related, Non-Commercial, Non-Pedicab Summonses Issued for Riding Without Requisite Lighting Equipment (VTL 1236(a)) by Critical Mass Dates and Times Feb 01, 2006 to Feb 01, 2008 by Issuing Precinct

Precinct	All Day				6 P.M. to 11 P.M. Anyday				6 P.M. to 11 P.M. Fridays			
	Brooklyn CM Date	Manhattan CM Date	Non-CM Date	Total	Brooklyn CM Date	Manhattan CM Date	Non-CM Date	Total	Brooklyn CM Date	Manhattan CM Date	Non-CM Date	Total
1	0	4	0	4	0	3	0	3	0	3	0	3
6	0	8	0	8	0	8	0	8	0	8	0	8
7	0	0	0	0	0	0	0	0	0	0	0	0
9	0	0	0	0	0	0	0	0	0	0	0	0
10	0	6	0	6	0	6	0	6	0	6	0	6
11	0	0	0	0	0	0	0	0	0	0	0	0
13	0	92	0	92	0	91	0	91	0	91	0	91
14	0	16	37	53	0	13	25	39	0	13	4	17
15	0	0	0	0	0	0	0	0	0	0	0	0
16	0	1	0	1	0	1	0	1	0	1	0	1
17	0	0	1	1	0	0	0	0	0	0	0	0
18	0	1	0	1	0	1	0	1	0	1	0	1
19	0	2	10	12	0	2	6	8	0	2	5	7
20	0	0	0	0	0	0	0	0	0	0	0	0
22	0	0	2	2	0	0	1	1	0	0	0	0
24	0	0	4	4	0	0	2	2	0	0	0	0
25	0	0	0	0	0	0	0	0	0	0	0	0
61	0	0	1	1	0	0	1	1	0	0	1	1
70	0	0	0	0	0	0	0	0	0	0	0	0
71	0	0	0	0	0	0	0	0	0	0	0	0
75	0	0	0	0	0	0	0	0	0	0	0	0
77	0	0	0	0	0	0	0	0	0	0	0	0
78	0	0	0	0	0	0	0	0	0	0	0	0
83	0	0	0	0	0	0	0	0	0	0	0	0
90	0	0	1	1	0	0	0	0	0	0	0	0
94	0	0	0	0	0	0	0	0	0	0	0	0
103	0	0	0	0	0	0	0	0	0	0	0	0
110	0	0	0	0	0	0	0	0	0	0	0	0
N/A	0	1	0	1	0	1	0	1	0	1	0	1
OTH	0	0	0	0	0	0	0	0	0	0	0	0
Total	0	131	56	187	0	126	36	162	0	126	10	136

Table 5. Number of Bicycling-Related, Non-Commercial, Non-Pedicab Summonses Issued for Disorderly Conduct (PL 240.20(5)) by Critical Mass Dates and Times Feb 01, 2006 to Feb 01, 2008 by Issuing Precinct

Precinct	All Day				6 P.M. to 11 P.M. Anyday				6 P.M. to 11 P.M. Fridays			
	Brooklyn CM Date	Manhattan CM Date	Non-CM Date	Total	Brooklyn CM Date	Manhattan CM Date	Non-CM Date	Total	Brooklyn CM Date	Manhattan CM Date	Non-CM Date	Total
1	0	0	0	0	0	0	0	0	0	0	0	0
6	0	1	0	1	0	1	0	1	0	1	0	1
7	0	0	0	0	0	0	0	0	0	0	0	0
9	0	0	0	0	0	0	0	0	0	0	0	0
10	0	0	0	0	0	0	0	0	0	0	0	0
11	0	0	0	0	0	0	0	0	0	0	0	0
13	0	22	9	31	0	17	1	18	0	17	0	17
14	0	37	44	81	0	18	28	46	0	18	8	26
15	0	0	0	0	0	0	0	0	0	0	0	0
16	0	0	0	0	0	0	0	0	0	0	0	0
17	0	2	5	7	0	1	2	3	0	1	0	1
18	0	1	0	1	0	0	0	0	0	0	0	0
19	0	1	1	2	0	0	0	0	0	0	0	0
20	0	1	4	5	0	0	0	0	0	0	0	0
22	0	0	8	8	0	0	2	2	0	0	0	0
24	0	9	1	10	0	3	0	3	0	3	0	3
25	0	0	0	0	0	0	0	0	0	0	0	0
61	0	0	0	0	0	0	0	0	0	0	0	0
70	0	0	0	0	0	0	0	0	0	0	0	0
71	0	0	0	0	0	0	0	0	0	0	0	0
75	0	0	0	0	0	0	0	0	0	0	0	0
77	0	0	0	0	0	0	0	0	0	0	0	0
78	0	0	0	0	0	0	0	0	0	0	0	0
83	0	0	0	0	0	0	0	0	0	0	0	0
90	0	0	11	11	0	0	3	3	0	0	3	3
94	0	0	0	0	0	0	0	0	0	0	0	0
103	0	0	0	0	0	0	0	0	0	0	0	0
110	0	0	0	0	0	0	0	0	0	0	0	0
N/A	0	2	0	2	0	2	0	2	0	2	0	2
OTH	0	0	0	0	0	0	0	0	0	0	0	0
Total	0	76	83	159	0	42	36	78	0	42	12	54

13th Precinct Bicycling-Related, Non-Commercial, Non-Pedicab Summonses by Month, 2/1/04 - 1/31/08

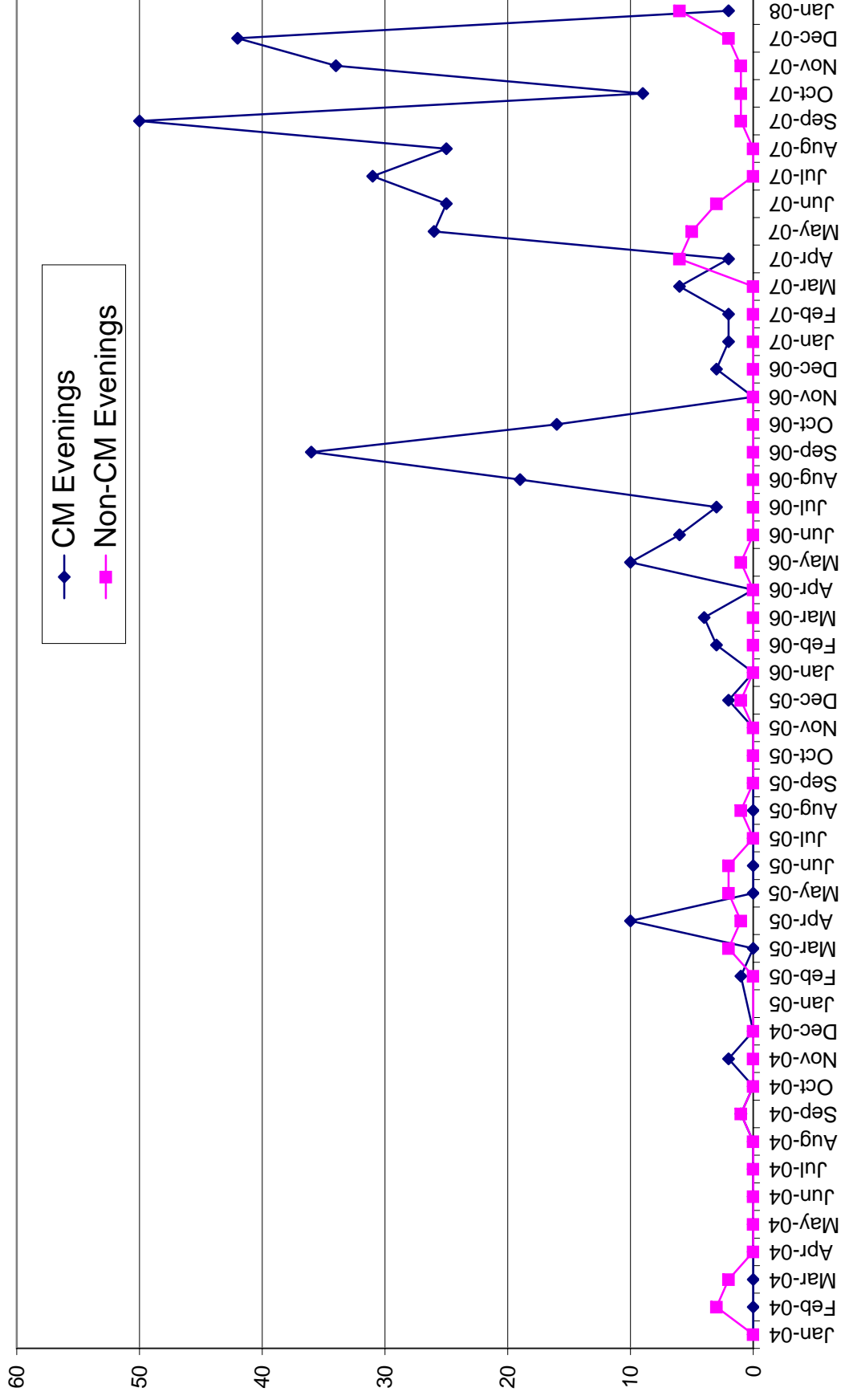


Exhibit A

05/22/2008

CURRICULUM VITAE

Andrew Alan Beveridge

Office: 233 Powdermaker Hall
Department of Sociology
Queens College--CUNY
Flushing, New York 11367
(718) 997-2837
(718) 997-2820 FAX

Home: 50 Merriam Avenue
Bronxville, New York 10708
(914) 337-6237
(914) 337-8210 FAX

PERSONAL

Born April 27, 1945, Madison, Wisconsin
Married, one child
U.S. Citizenship

EDUCATION

1968-73 Yale University (Sociology), M.Phil. 1971; Ph.D. 1973
1967-68 Yale University (Econometrics, Economic Theory)
1964-67 Yale College (Economics), B.A. 1967, with honors in economics
1963-64 California Institute of Technology (Math, Science)

TEACHING EXPERIENCE

2006-09 Chair, Queens College, Department of Sociology
2002 Professor, Queens College and Ph.D. Program in Sociology, Graduate School and University Center, The City University of New York
1981-01 Associate Professor of Sociology, Queens College, and Ph.D. Program in Sociology (1984-), Graduate School and University Center, The City University of New York
1981-82 Associate Professor of Sociology, Columbia University (on leave)
1973-81 Assistant Professor of Sociology, Columbia University
1972-73 Acting Instructor, Department of Sociology, Yale University
1969-70 Assistant in Instruction, Department of Sociology, Yale University

RESEARCH APPOINTMENTS

2008-- Executive Committee and Affiliate, CUNY Institute for Demographic Research
1987-88 Visiting Researcher, Center for Studies of Social Change, The New School for Social Research
1982-83 Research Associate, Center for the Social Sciences, Columbia University
1980-82 Co-Director, Annual Housing Survey Project, Center for the Social Sciences, Columbia University
1970-72 Research Affiliate, Institute for African Studies (the former Rhodes-Livingstone Institute), Lusaka, Zambia
1965-69 Assistant in Research and Programmer, Department of Economics and Economic Growth Centre, Yale University

RECOGNITION AND AWARDS

2007 Public Understanding of Sociology Award by the American Sociological Association.
2005— Marquis Who's Who in America
2006--- Marquis Who's Who in the World

PUBLICATIONS

Papers

- Forthcoming "Commonalities and Contrasts in the Development of Major United States Urban Areas: A Spatial and Temporal Analysis from 1910 to 2000" in M. Guttman, K. Sylvester, and G. Deane (ed.), *New Approaches to the Analysis of Space and Time in Historical Demography* (Springer for International Union for the Scientific Study of Population).
- 2007 "Who Counts for Accountability? High-Stakes Test Exemptions in a Large Urban School District." Jennifer Booher-Jennings and Andrew A. Beveridge. In A. Sadovnik, J. O'Day, G. Bohrnstedt, & K. Borman (Eds.), *No Child Left Behind and the Reduction of the Achievement Gap: Sociological Perspectives on Federal Education Policy*. Routledge, Taylor & Francis Group. Pp. 77-95..
- 2006 "Community-Based Prevention Programs in the War on Drugs: Findings from the "Fighting Back" Demonstration." Saxe, Leonard; Kadushin, Charles; Tighe, Elizabeth; Beveridge, Andrew A. Livert, David; Brodsky, Archie; Rindskopf, David. *Journal of Drug Issues*, 36:2 (Spring) pp. 263-294.
- 2006 "Varieties of Substance Use and Visible Drug Problems: Individual And Neighborhood Factors". Julie Ford and Andrew A. Beveridge. *Journal of Drug Issues*, 36:2 (Spring) pp. 377-392,
- 2006 Neighborhood Crime Victimization, Drug Use And Drug Sales: Results From The "Fighting Back" Evaluation". Julie Ford and Andrew A. Beveridge. *Journal of Drug Issues*, 36:2 (Spring) pp. 393-416.
- 2006 "Scale-Up Methods as Applied to Estimates of Heroin Use." By: Kadushin, Charles; Killworth, Peter D.; Bernard, H. Russell; Beveridge, Andrew A. *Journal of Drug Issues*, Spring 36:2 (Spring) pp 417-440.
- 2004 "'Bad' Neighborhoods, Fast Food, "Sleazy" Businesses and Drug Dealers: Relations Between the Location of Licit and Illicit Businesses in the Urban Environment" Julie Ford and Andrew A. Beveridge, *Journal of Drug Issues* 34:1 (Winter): pp. 51-76.
- 2003 "Race and Class in the Developing New York and Los Angeles Metropolises: 1940 to 2000." Andrew A. Beveridge and Susan Weber. In David Halle (ed.), *New York and Los Angeles: Politics, Society and Culture, A Comparative View*. University of Chicago Press. Pp. 49-78
- 2003 "Residential Separation and Segregation, Racial and Latino Identity, and the Racial Composition of Each City." David Halle, Robert Gedeon, and Andrew A. Beveridge. In David Halle (ed.), *New York and Los Angeles: Politics, Society and Culture: A Comparative View*. University of Chicago Press. Pp. 150-190.
- 2003 "The Black Presence in the Hudson River Valley, 1790 to 2000: A Demographic Overview." Andrew A. Beveridge and Michael McMenemy in Myra B. Armistead (ed.), *Mighty Change, Tall Within: Black Identity in the Hudson Valley*. State University of New York Press. Pp. 263-280.
- 2002 "Immigrant Residence and Immigrant Neighborhoods in New York, 1910 and 1990." In Pyong Gap Min(ed.), *Classical and Contemporary Mass Migration Periods: Similarities and Differences*. Altamira Press. Pp.199-231.
- 2002 "Immigration, Ethnicity and Race in Metropolitan New York, 1900-2000." In Anne Kelly Knowles (ed.), *Past Time, Past Place: GIS for History* (ESRI Press). Pp. 65-78.
- 2001 "The Visibility of Illicit Drugs: Implications for Community-based Drug Control Strategies". Saxe, L., Kadushin, C., Beveridge, A., Livert, D., Tighe, E., Ford, J., and Rindskopf, D. *American Journal of Public Health* . 91:12 (December) p.: 1987-1994.
- 2001 "Does Neighborhood Matter? Family, Neighborhood and School Influences on Eighth-Grade Mathematics Achievement." Sophia Catsambis and Andrew A. Beveridge. *Sociological Focus*, 34 (October) p. 435-457.

- 2001 "Simulating Social Research Findings To Aid in Teaching Introductory-Level Sociology Courses." Andrew A. Beveridge, Joanne Miller, Dean Savage, Lauren Seiler, and Carmenza Gallo. In Vernon Burton (ed.), *The Renaissance of Social Science Computing*. Champaign: University of Illinois Press.
- 2000 "Survey Estimates of Drug Use Trends in Urban Communities: General Principles and Cautionary Examples." Andrew A. Beveridge, Charles Kadushin, Leonard Saxe, David Rindskopf and David Livert. *Substance Use and Misuse*, 35, pp. 85-117.
- 1997 "Think Globally Act Locally: Assessing the Impact of Community-Based Substance Abuse Prevention." Saxe, L., Reber, E., Hallfors, D., Kadushin, C., Jones, D., Rindskopf, D., and Beveridge, A. *Evaluation and Program Planning*. 20: 3, 357-366.
- 1988 "An Evaluation of 'Public Attitudes Toward Science and Technology' in *Science Indicators the 1985 Report*." Andrew A. Beveridge and Fredrica Rudell. *Public Opinion Quarterly*, 53: (Fall): 374-385.
- 1986 "Microcomputers as Workstations for Sociologists." *Sociological Forum*, 1 (Fall): 701-715.
- 1985 "Running Records and the Automated Reconstruction of Historical Narrative." Andrew A. Beveridge and George V. Sweeting. *Historical Social Research* 35 (July): 31-44.
- 1985 "Local Lending Practices: Borrowers in a Small Northeastern Industrial City, 1832-1915." *Journal of Economic History*, 65 (June) 2: 393-403.
- 1985 "Action, Data Bases, and the Historical Process: The Computer Emulating the Historian?" Andrew A. Beveridge and George V. Sweeting. In Robert F. Allen (ed.), *Data Bases in the Humanities and Social Sciences*. Osprey Florida, Paradigm Press, Inc. 117-122.
- 1981 "Studying Community, Credit and Change by Using 'Running' Records from Historical Sources." *Historical Methods*, 14 (Fall) 4: 153-162.
- 1980 "Organizing 'Running' Records to Analyze Historical Social Mobility." Andrew A. Beveridge, George R. Hess and Mark P. Gergen. In Joseph Raben and Gregory Marks (eds.), *Data Bases in the Humanities and Social Sciences*. Amsterdam and New York, North-Holland Publishing Company. 157-164.
- 1977 "Social Effects of Credit: Cheshire County, New Hampshire: 1825-1860." *Regional Economic History Research Center Working Papers*, Autumn: 1-33.
- 1974 "Economic Independence, Indigenization and the African Businessman: Some Effects of Zambia's Economic Reforms." *African Studies Review*, 17 (December) 3: 477-492.

Book

- 1979 *African Businessmen and Development in Zambia*. Andrew A. Beveridge and A. Oberschall. Princeton N.J. and Guildford, Surrey, United Kingdom, Princeton University Press. 382 pp.

Invited Pieces and Columns

Gotham Gazette Demographic Topic Columns: January 2001—

- "Housing Squeeze Shows No Sign of Easing" (May 2008)
 "A Religious City" (February 2008)
 "Will the 2010 Census 'Steal' New Yorkers?" (December 2007)
 "The End of 'White Flight'?" (November 2007)
 "Feeling the Effects of a Housing Bust" (September 2007)
 "No Quick Riches for New York's Twentysomethings." (June, 2007)
 "Women of New York City." (March, 2007)
 "Stuyvesant Town and Peter Cooper Village, Then and Now." (September, 2006)
 "What New Yorkers Are Like Now" – First Results of the American Community Survey." (August, 2006)
 "Hitting the 9 Million Mark." (June, 2006)

- "New York's Asians" (May, 2006)
- "Undocumented Immigrants." (April, 2006)
- "Transit Workers/Transit Riders; Beginning Lawyers Are Richer; 9 Million New Yorkers?" (March, 2006)
- "Teachers In NYC's Institutions Of Higher Learning." (January, 2006)
- "Hispanics and the Ferrer Candidacy." (December, 2005)
- "Disabled in New York City; Also: Is The City Still Booming?" (November, 2005)
- "Who Can Afford to Live in New York City?" (October, 2005)
- "Can NYC "Profile" Young Muslim Males?" (August, 2005)
- "Upstate And Downstate – Differing Demographics, Continuing Conflicts." (July, 2005)
- "Living at Home After College." (June, 2005)
- "Four Trends That Shape The City's Political Landscape." (May, 2005).
- "High School Students." (April, 2005)
- "New York's Responders and Protectors." (March, 2005)
- "Who Got The Death Penalty." (February, 2005)
- "Wall Street Bonus Babies." (January, 2005)
- "New York Lawyers: A Profile." (December, 2004)
- "Bush Does Better and Other Election Results In NYC." (November, 2004)
- "New York's Creative Class." (October, 2004)
- "Portrait of Same-Sex (Married) Couples." (September, 2004)
- "New York City Is a Non-Voting Town." (August, 2004)
- "New York's Divided Afghans." (July, 2004)
- "Flaws In The New School Tests." (June, 2004)
- "Why Is There A Plunge In Crime?" (May, 2004)
- "Estimating New York City's Population." (April, 2004)
- "The Passion for Religion Ebbs." (March, 2004)
- "Imprisoned In New York." (February, 2004)
- "Who Are NYC's Republicans?" (January, 2004)
- "Five Hidden Facts About Housing--An Analysis Of Data From The Housing and Vacancy Survey." (December, 2003)
- "Young, Graduated and in New York City." (October, 2003)
- "Back To (Public and Private School." (September, 2003)
- "The Vanishing Jews." (July, 2003)
- "The Affluent Of Manhattan." (June, 2003)
- "How Different Is New York City From The United States?" (May, 2003)
- "The Poor In New York City." (April, 2003)
- "Eight Million New Yorkers? Don't Count On It." (March, 2003)
- "Does Archie Bunker Still Live in Queens?" (February, 2003)
- "Is There Still A New York Metropolis?" (January, 2003)
- "City of The Foreign-Born." (December, 2002)
- "Can The US Live Without Race?" (November, 2002)
- "New York's Declining Ethnics." (October, 2002)
- "A Demographic Portrait Of The Victims In 10048." (September, 2002)
- "Manhattan Boom." (August, 2002)
- "GOP Senate Majority Repeals Census 2000." (July, 2002)
- "Changing New York City." (June, 2002)
- "The Census Bureau's Bad Estimates." (May, 2002)
- "The Boom 1990's?" (April, 2002)
- "Segregation." (March, 2002)
- "Non-Legal Immigrants." (February, 2002)
- "Counting Muslims." (January, 2002)
- "The Arab Americans In Our Midst." (September, 2001)
- "A White City Council." (August, 2001)
- "Counting Gay New York." (July, 2001)
- "Redistricting." (June, 2001)
- "Politics And The Undercount." (May, 2001)
- "False Facts About Census 2000." (April, 2001)
- "Eight Million New Yorkers!" (March, 2001)
- "Redefining Race." (February, 2001)

"Census Bureau Finds 830,000 'Extra' New Yorkers." (January, 2001)

Other:

- 1988 "Credit to the Community: American Banking's Tribal Roots." Thesis (Spring): 18-23.
 1996 "Sociologists: Eyes Open for Trends in New York City." *ASA Footnotes*, January. p. 1.
 1996 "Stroll the Upper East Side for Lifestyles of the Elite." *ASA Footnotes*, March p. 1
 1976 "African Businessmen in Zambia." *New Society* 35 (18 March) 702: 599-601.

Book Reviews

- 1995 *The Assassination of New York*. Robert Fitch. *Contemporary Sociology*, 24 (March): 233-234.
 1990 *Doing Deals: Investment Banks at Work*. Robert G. Eccles and Dwight B. Crane. *Contemporary Sociology*, 19 (May): 186-187.
 1988 *The End of Economic Man? Custom and Competition in Labor Markets*. David Marsden. *Contemporary Sociology*, 17 (March): 172-173.
 1988 *Technocrimes: The Computerization of Crime and Terrorism*. August Bequai. *Society*, 25 (May/June): 87-88.
 1985 *The Economic Basis of Ethnic Solidarity: Small Business in the Japanese American Community*. Edna Bonacich and John Modell. *American Journal of Sociology*, 90 (January): 942-945.
 1979 *Oneida Community Profiles*. Constance Noyes Robertson. *Business History Review*, 53 (Autumn): 277-278.
 1978 *Urban Man in Southern Africa*. C. Kileff and W.C. Pendleton, Eds. *African Studies Association Review of Books*, 4: 25-26.
 1977 *Colonialism in Africa, 1870-1960 Volume Four: The Economics of Colonialism*. Peter Duignan and L.H. Gann, Eds. *Business History Review*, 51 (Autumn): 382-385.
 1976 *The Quality of American Life: Perceptions, Evaluations, and Satisfactions*. Angus Campbell, Philip Converse, and Willard L. Rogers. *Political Science Quarterly*, 91 (Fall): 529-531.
 1976 *Corporate Power in an African State: The Political Impact of Multinational Mining Companies in Zambia*. Richard L. Sklar. *African Studies Association Review of New Books*, 2: 53-55.

Reports

- 2000 *Fighting Back Household Survey, Interim Report of 1995-1999 Findings*. David Livert, Charles Kadushin, Leonard Saxe, Andy Beveridge, David Rindskopf, Elizabeth Tighe, Jennifer Hoffman, Saul Kelner, Ricardo Barreras, and Julie Ford.
 1997 *Fighting Back Evaluation Interim Report: Wave II General Population*. Survey David Livert, Charles Kadushin, Leonard Saxe, Andy Beveridge, David Rindskopf, Elizabeth Tighe, Jennifer Hoffman, Saul Kelner, Ricardo Barreras, and Julie Ford.
 1997 *Monitoring Archival Indicators of Alcohol and Other Drug Harm: A Fighting Back Progress Report*. Andrew Beveridge, Elizabeth Tighe, Mary Jo Larson, David Rindskopf, David Livert, Susan Weber, Charles Swartz, John McKenna, Charis Ng, Leonard Saxe.
 1997 *Social Trends in North America*: Andrew A. Beveridge, Vivian Brachet, Lorne Tepperman and Jack Veugelers. Prepared for the State of the Environment Report of the Consortium for Environmental Cooperation. Montreal, Quebec.
 1996 *Fighting Back Program Interim Report*, Leonard Saxe, Emily Reber, Charles Kadushin, Andrew A. Beveridge, Mary Jo Larson, David Rindskopf, David Livert, Joe Marchese, Michael Stirrat, and Susan Weber.
 1994 *Black and White Property Tax Rates and Other Homeownership Costs in 30 Metropolitan Areas: A Preliminary Report*. Andrew A. Beveridge and Jeannie D'Amico. Queens College of the City University of New York, Department of Sociology, Program for Applied Social Research.

- 1994 *An Analysis of Black and White Income Differences: Queens County and the United States.* Andrew A. Beveridge and Jeannie D'Amico. Queens College of the City University of New York, Department of Sociology, Program for Applied Social Research.
- 1992 *Patterns of Residential Segregation in New York City, 1980-1990: A Preliminary Analysis.* Andrew A. Beveridge and Hyun Sook Kim. Queens College of the City University of New York, Department of Sociology, Program in Applied Social Research.
- 1988 *Integrating Social Science Workstations into Research and Teaching: Final Report to IBM.* Andrew A. Beveridge and Lauren Seiler. Queens College of the City University of New York, Department of Sociology.
- 1984 *Changing Lifestyles and Newspaper Reading: An Exploratory Study of Younger Adults.* Andrew A. Beveridge and Albert E. Gollin. Newspaper Readership Project, Newspaper Advertising Bureau.
- 1978 *Social Effects of Time of Use Pricing of Electric Power: A Sociological Approach.* Electric Power Research Institute.

SELECTED PRESENTATIONS (Last Three Years, Does Not Include Presentations to Community Groups or Other General Public Venues)

- 2007 "School Games: Does Gaming the System Affect Students' Academic Achievement?" Andrew A. Beveridge and Jennifer Booher Jennings. To be presented at the 2007 American Educational Research Association Annual Meeting, Chicago, IL, April 9 to 13.
- 2006 "Social Explorer: A New Approach to Web Based Thematic Maps." To be presented at the Invited Conference on Spatial Thinking in the Social Sciences and Humanities," Urbana, IL, National Center for Supercomputing Applications (NCSA) .December 18-19.
- 2006 "Social Explorer as a Resource for Teaching." Andrew A. Beveridge and Joshua Radinsky. Presented at the 2006 Annual Meeting of the Social Science History Association, Minneapolis, MN, November 2 to 5.
- 2006 "Peopling and Building New York City, 1900 to 2000: The Interaction of Demographic Factors and Land Use Decisions." Presented at the 2006 Annual Meeting of the Social Science History Association, Minneapolis, MN, November 2 to 5.
- 2006 "Commonalities and Contrasts in the Development of Major United States Urban Areas: A Spatial and Temporal Analysis from 1910 to 2000. Presented at the International Union for the Scientific Study of Population Seminar Space and Time in Historical Demographic Research – New Methods and Models." Minneapolis, MN, October 31 and November 1.
- 2006 "Neighborhood Crime Victimization, Drug Use and Drug Sales" Julie Ford and Andrew A. Beveridge. Presented at the 2006 Annual Meeting of the American Sociological Association. Montreal, Quebec, August 11-14.
- 2006 "Are All US Urban Areas Becoming Los Angeles? New Findings About Urban Growth and Development" Presented at the 2006 Annual Meeting of the American Sociological Association. Montreal, Quebec, August 11-14.
- 2006 "Research Workshop. Geographical Information Systems (GIS) as a Research Tool for Sociologists." Presented at the 2006 Annual Meeting of the American Sociological Association. Montreal, Quebec, August 11-14.
- 2006 "Research Workshop. Using Data from the U.S. Department of Education for Research" Presented at the 2006 Annual Meeting of the American Sociological Association. Montreal, Quebec, August 11-14.
- 2006 "The Sociological Implications of Improbable Score Patterns in the Houston Independent School District." Jennifer Booher Jennings and Andrew A. Beveridge. Presented at the Annual Meeting of American Education Research Association. San Francisco, CA, April 10 to 14.

- 2005 "Varieties of Urban and Suburban Growth and Development: New Findings Using the NHGS, 1910 to 2000." Andrew Beveridge and Susan Weber. Presented at the 2005 Annual Meeting of the Social Science History Association, Portland Oregon, November 3 to 6.
- 2005 "The Prevalence and Impact of Elective and Defacto Test Exemption in the Houston Independent School District." Jennifer Booher-Jennings and Andrew A. Beveridge. Presented at the Sociology Education Section of the American Sociological Association Mini-Conference on No Child Left Behind. Philadelphia, PA, August 12.
- 2005 "Business Location, Segregation and Neighborhood Demographic Composition: A First Look at Patterns Based Upon Forty-One United States Communities" Julie Ford and Andrew A. Beveridge. Presented at the Annual Meeting of the American Sociological Association, Philadelphia, PA. August 13-16.
- 2005 "Professional Workshop: Using Social Explorer in Teaching" Presented at the Annual Meeting of the American Sociological Association, Philadelphia, PA. August 13-16.
- 2005 "Professional Workshop: Using Social Explorer in Research" Presented at the Annual Meeting of the American Sociological Association, Philadelphia, PA. August 13-16.
- 2004 "Postwar Developments in New York and Los Angeles: Surprising Findings Using GIS Techniques." Presented at the NEH Funded Invited Conference: History and Geography: The Role of Geographical Information in Historical Scholarship, Chicago, the Newberry Library, March 25 to 27.
- 2004 "Family and Neighborhood Connection in School Readiness: A First Look Using the Early Childhood Longitudinal Study of Kindergarden Geocoded Data." Sophia Catsambis and Andrew A. Beveridge. Presented at the Annual Meeting of the American Sociological Association, San Francisco, CA, August 14-17.
- 2004 "The Locational Dynamics of Businesses and Crime in Forty-One U.S. Cities: The Impact of Neighborhood Disadvantage and Racial Composition": Julie Ford and Andrew A. Beveridge. Presented at the Annual Meeting of the American Sociological Association, San Francisco, CA, August 14-17.

SELECTED GRANTS AND AWARDS

Grants and Awards in Progress

- "Collaborative Research- The National Historical Geographic Information System" National Science Foundation, Sociology Program, April 15, 2007—April 14, 2111. \$99,725 (Continuing Award.)
- "Collaborative Research- Creating Exemplary Curricula and Supporting Faculty Development in Using Social Explorer to Teach with Demographic Data Maps." National Science Foundation, Division of Undergraduate Education, CCLI, Phase 1. Andrew A. Beveridge (PI) \$112,470 and Joshua Radinsky (PI), University of Illinois, Chicago \$37,500. (10/1/2006—9/30/2008)
- "Census Analyses for the New York Metropolitan Area." New York *Times*, Newspaper Division, September 1993--. (\$1,479,726 through 8/31/2009.

Grants and Awards Completed

- "Collaborative Research: A Digital Library Collection for Visually Exploring United States Demographic and Social Change." Andrew A. Beveridge at Queens, PI (\$389,072) and David Halle at UCLA, PI (\$317,674) (10/1/2002—3/31/2007))
- "National Historical Geographical Information System." Subcontract through University of Minnesota (John Adams, et. al.) Organize Historical City Based Data. (\$194,000 , 5/1/2001—4/30/2006) Sub-Contract from National Science Foundation Infrastructure Grant.

- Andrew A. Beveridge, National Center for Education Statistic through Educational and Statistical Services Institute; "Using Socio-Economic Characteristics of Residents of Student Neighborhoods as a Proxy for Socio-Economic Characteristics of Students: An Assessment Using ECLS-K" 11/01/2004—6/30/2005, \$57,958
- Andrew A. Beveridge and Sophia Catsambis, National Center for Education Statistic through Educational and Statistical Services Institute; "Adding Census 2000 Data and Geographic Location to the ECLS-K Data Set" 09/01/2002—12/31/2003 \$59,335
- Collaborative Research –Visualizing and Exploring United States Urban and Rural Social Change, 1790-2000: Interactive Multimedia and Web Based Tools. Andrew A. Beveridge at Queens, PI (\$213,000) and David Halle at UCLA, PI (\$205,000) (.4/1/2001—3/30/2004)) National Science Foundation, Division of Undergraduate Education, Educational Materials Development.
- Leonard Saxe, Charles Kadushin, Andrew A. Beveridge, "Evaluation of Fighting Back." Robert Wood Johnson Foundation, 1994-- (c.a. \$370,000 through 11/14/2002;)
- "Development of a Map and Demographic Data Server." CUNY Software Institute, Spring 2001. (\$8,000)
- "Census Analyses for the New York Metropolitan Area." *New York Times*, Newspaper Division, September 1993—. (\$741,536 through 8/31/2003; \$ 141,091 9/1/03-8/31/04)
- Randolph McLaughlin and Andrew A. Beveridge, "Redistricting and Minority Voting Rights in Metropolitan New York." 2000-2001. (Through Pace Law School \$150,000 total; \$60,000 for Andrew Beveridge)
- "Mapping and Exploring New York City Change, 1905-2000: A Set of Interactive Web Based Tools." National Science Foundation, July 1, 1999-December 31, 2000. (\$78,960)
- Samuel Heilman, Robert Kapsis, Max Kilger, Dean B. Savage and Andrew A. Beveridge, "A Laboratory for Integrating Multimedia and World Wide Web Technology Into Sociological Instruction." National Science Foundation, July 1996-July 1998. (\$47,846)
- "A Shared Computer Work Station and Storage System for Social Science Research." National Science Foundation, September 1996-August 1997. (\$20,964)
- "The Battle for Yonkers and the Dilemma of Desegregation." Presidential Research Award, 1993-1994. (One Term Release)
- "Why Do Neighborhoods Change or Stay the Same?" Ford Foundation Diversity Initiative Grant. Spring 1993. (Course Release and Student Stipends)
- "Separate American Dreams Face the Common American Dilemma: The Battle to Segregate Yonkers, New York, 1940-1990." Profession Staff Congress Research Award Program. July 1, 1992-December 31, 1993 and July 1, 1993-December 31, 1994.
- "Using the Census for Social Mapping Across the Sociology Curriculum." President's Mini-Grant for Innovative Teaching, 1992-1993. (\$3,500)
- Diane Poland, Andrew A. Beveridge, and Wing-Shing Chan, "Modeling the Results of Union Elections by Developing Standard and Hierarchical Logistical Models." Probe Program for Grand Challenges in the Social Sciences, National Center for Supercomputing Activities, 1992-1994. (Super-Computer Time at National Center for Supercomputing Activities)
- Andrew A. Beveridge, Joanne Miller, Lauren H. Seiler and Dean B. Savage, "The Introductory Sociology Curriculum Initiative: An Empirical, Scientific Approach." National Science Foundation, Undergraduate Course and Curriculum Program. April 15, 1992-July 31, 1995. (\$160,000)
- Andrew A. Beveridge, Joanne Miller, Dean Savage and Lauren H. Seiler, "A Computer Laboratory for Quantitative and Scientific Reasoning in Sociology." National Science Foundation, Instructional Instrumentation and Laboratory Program. July 1, 1991-June 30, 1994. (\$50,825)
- "Socially Mapping the New York Area." Ford Diversity Initiative Grant. Spring 1992. (Course Release)

- "Development of Research Mentorship and Laboratory in Sociology." Department Faculty Development Program, CUNY Dean for Research and Academic Affairs. February 1, 1991-January 31, 1992. (One Course Released Time)
- "Integrating Yonkers." Faculty-In-Residence Award, 1988-1989. (One Course)
- "Credit Allocation and Community Change." Faculty Fellowship, Fall 1987.
- "Credit Allocation and Community Change." Professional Staff Congress CUNY Research Award Program. July 1, 1986-June 30, 1988. (\$13,268)
- "A Study of Industrial Development of an Agricultural Community Based Upon Financial Records: Keene and Cheshire County, New Hampshire, 1820-1915." Putnam Foundation. November 1, 1985-December 31, 1988. (\$33,000)
- Lauren Seiler and Andrew A. Beveridge, "The Intelligent Work Station in Social Science Research: Development, Evaluation, Instruction and Demonstration." International Business Machines Corporation, Special Study. October 1, 1985-September 30, 1987. (\$78,000 of hardware and software, \$17,000 funding).
- Andrew A. Beveridge and Lauren Seiler, "Integrated Software for the Social Research Workstation." Inter-University Consortium for Educational Computing. September 1, 1985-August 30, 1986. (\$20,000)
- "A Study of the Industrial Development of an Agricultural Community." National Endowment for the Humanities Grant, Basic Research Program. January 1, 1984-December 31, 1985. (\$75,000)
- "Credit Allocation and Community Change." Professional Staff Congress CUNY Research Award, July 1, 1984-December 31, 1985. (\$6,973)
- "Credit Allocation and Community Change." Professional Staff Congress CUNY Research Award, July 1, 1983-December 31, 1984. (\$6,928)
- Andrew A. Beveridge and Phoebus J. Dhrymes, "Longitudinal Transformation and Analysis of the Annual Housing Surveys." Department of Housing and Urban Development. January 1, 1980-January 31, 1982. (\$248,000)
- "Credit and Social Change: Cheshire County and Its Provident Institution, 1832-1915." American Council of Learned Societies, Fellowship. September 1, 1978-August 30, 1979. (\$13,500)
- "The Context of Credit in Wilmington, Delaware, 1800-1870." Regional Economic History Research Center, Eleutherian Mills Hagley Foundation, Grant and Fellow, 1978-1979. (\$12,000)
- "Societal Effects of Credit Allocation." National Science Foundation Sociology Program Research Grant. January 1, 1976-November 30, 1978. (\$81,781)
- "Social Structure, Social Change and Credit Allocation: A Case Study." National Endowment for the Humanities Summer Stipend. 1976. (\$2,000)
- "Social Structure, Social Change and Credit Allocation: A Case Study." American Philosophical Society. Grant, 1976. (\$750)
- "African Businessmen in Zambia: Economic, Social and Governmental Impact." Foreign Area Fellowship Program Fellowship, 1970-1971. (\$11,400)
- National Institute of Mental Health Pre-Doctoral Research Grant, 1969-1972 (Stipend and Tuition)

OTHER SOCIOLOGICAL RESEARCH ACTIVITIES

Selected Analyses Appearing in *New York Times* and Elsewhere (2005 and 2006 only)

- "It's Official: To Be Married Means To Be Outnumbered" October 15, 2006 By Sam Roberts
- "Across Nation, Housing Costs Rise As Burden" October 3, 2006 By Janny Scott And Randal C. Archibold;
- "In Queens, Blacks Are The Have-Nots No More" October 1, 2006 By Sam Roberts
- "New York Area Is A Magnet For Graduates" August 16, 2006 - By Patrick Mcgeehan

- "Immigrants Swell Numbers In And Near City" August 4, 2006 By Sam Roberts --
- "In New Data, A Changing Profile Of The New York Region And Connecticut." August 4, 2006 - By Sam Roberts
- "Men Not Working, And Not Wanting Just Any Job." July 31, 2006 By Louis Uchitelle And David Leonhardt; Amanda Cox Contributed Reporting For This Article From New York.
- "Flight Of Young Adults Is Causing Alarm Upstate " June 13, 2006 - By Sam Roberts;
- "76 Million Reasons To Reconsider What Is Typical For Those Over 60" April 11, 2006 - By Terry Schwadron
- "A Paler Shade Of Green" March 18, 2006 - By Jo Craven Mcginty
- "Whites To Be Minority In New York Area Soon, Data Show" March 7, 2006 - By Sam Roberts
- "Rethinking The Nation's First Suburb " December 25, 2005 - By Bruce Lambert -
- "Manhattan's Little Ones Come In Bigger Numbers ."By Eduardo Porter
- "Immigrant Entrepreneurs Are Saving Main Street" September 25, 2005 - By Phillip Lutz;
- "Campaigning For City Hall: The Voters; New York's Ever-Changing Electorate: Next, The White Minority" September 13, 2005 - By Sam Roberts
- "Storm And Crisis: Employment; Willing Workers But With The Wrong Job Skills September 9, 2005 - By David Leonhardt And Louis Uchitelle; Ken Belson In Long Beach, Miss.; Simon Romero In Galveston, Tex.; And Barnaby J. Feder In Jackson, Miss., Contributed Reporting For This Article
- "In Manhattan, Poor Make 2½ For Each Dollar To The Rich" September 4, 2005 - By Sam Roberts
- "The Pizza Is Still Old World, Only Now The Old World Is Tibet." July 31, 2005 - By Joseph Berger
- "New York City's Population Is Down. Or Is It?" April 15, 2005 - By Nicholas Confessore
- "The Slow Fadeout Of Rent Regulated Apartments" April 10, 2005 - By Dennis Hevesi.
- (Since 1990, Professor Beveridge of Queens College Sociology has been cited over 250 times in the New York Times, and materials have been syndicated or appeared elsewhere. Other media appearances include NPR, WCBS, WABC, WNBC, WNYW)

STUDIES CONNECTED WITH LEGAL CASES

Legislative Districting and Redistricting

United States Department of Justice. *United States v. Port Chester*, Investigation, Voting Analysis, Analysis of Potential Plans, Reports and Declarations, Testimony 2002--

Emery, Celli, Curti, Brinkerhoff and Abadi, *Rodriguez v. Pataki*. Produced a variety of reports, affidavits, deposition testimony and trial testimony related to claims about the State Senate Redistricting Plan in New York State. 2002--2004

Randolph McClaughlin, New Rochelle Voter Rights Committee, et al vs. New Rochelle, et. al. Prepared plaintiffs plan. Affirmation, Report Filed, Testified at trial; crafted plan agreed to by New Rochelle, GOP, Conservatives, and New Rochelle Voting Rights Committee. Testified at settlement hearing. 2003--.

Fred Brewington, *Montano v. Suffolk County Board of Legislators*. Produced report and plan and testified in trial re: proposed redistricting of Suffolk County Legislature. Cited in District Court Opinion, 2003.

Center for Constitutional Rights and Social Justice Center, Pace University Law School. *Goosby v. Town Board of Hempstead*. Designed and presented plaintiff's plan for districting the Town of Hempstead, a community of 720,000. Created single member district plan using census data and boundary files. Submitted plan including maps and data and testified at trial. Court ordered plan; affirmed by 2nd Circuit; Supreme Court denied certiorari. Plan and testimony cited in District Court and 2nd Circuit opinions. 1995-1997.

Connecticut Civil Liberties Union. *Coalition for Fair Representation, et al. v. City of Bridgeport, et al.* Redistricting Law Suit. Analysis of segregation patterns in Bridgeport Connecticut. Affidavit and maps filed. Cited in 2nd Circuit Decision. 1993-1994.

Berger, Poppe, Janiec. *Diaz, et al. v. City of Yonkers.* Prepared redistricting plan for the Yonkers City Council, met with plaintiffs and defendants and in court. Plan accepted by City Council and District Court. 1992-1993.

Housing Discrimination, Affirmative Steering, Rent Stabilization and Affordability, etc.

Three Rivers Legal Services and Southern Legal, *Helene Henry, et al v. National Housing Partnership* (Three reports, 2007-2008, United States District Court, Northern District of Florida, Gainesville, Division);

Legal Services of Southern New Jersey. *Bergen Lanning Residents in Action, et al., vs. Melvin R. "Randy" Primus, et al* Report re: Bergen Square Redevelopment in Camden, NJ. 2005.

Legal Services of Southern New Jersey. *Cramer Hill Residents Association, et al., vs. Melvin R "Randy" Primus, et al* Report re: Cramer Hill Redevelopment in Camden, NJ. 2005.

Legal Services of Southern New Jersey. *Citizens In Action, et al., vs. Township of Mount Holly, et al* Report and Testimony re: Redevelopment of the Gardens in Mount Holly. 2005.

Legal Services of Southern New Jersey. *Hispanic Alliance, et al., vs. City of Ventnor, et al.* Report and Testimony re: Ventnor Redevelopment 2005.

Legal Services of New Jersey. *Connie Forest, et al vs. Mel Martinez, et al.* Report re: Brick Towers Demolition in Newark. 2003-2006

Legal Services of Southern Florida, *Reese v. Miami-Dade County Housing Authority*, Analysis of Relocation of Public Housing Tenants. Report and Testimony at Trial. Cited in District Court Opinion. 2001-2003

Legal Services of Eastern Missouri, *Hines vs. Charleston Housing Authority*, Disparate Impact Analysis of Public Housing Demolition. Report, Update Report and Testimony at Trial. 2002-2003

Legal Services of Southern Florida, *Reese v. Miami-Dade County Housing Authority*, Analysis of Relocation of Public Housing Tenants. Report and Testimony at Hearing. Cited in District Court Opinion. 2001-2003

City of Long Beach, *Walton v. City of Long Beach.* Analyzed the vacancy rate in the City of Long Beach for 1992 through 2000. Filed affidavits in state and federal court. Testified in proceedings. Carried out various studies related to vacancy rate. 1997-2000.

Arnold and Porter. *Witt, et al. v. New York State Board of Elections.* Analyzed those who have two or more domiciles where they regularly reside for case involving voting in more than one local election. 2000-2002

Coral Ortenberg Zeck and Condipoti. *Village of Spring Valley v. Town of Clarkstown.* Analyzed the affordability of housing in Rockland County New York for a case involving the annexation of a parcel to build such housing. Testified at trial. 2000.

United States Justice Department, Civil Rights Division. *United States vs. Tunica Mississippi School District.* Analyzed proposal to build a new school near the Casino development in Tunica Mississippi, which was desegregated by order in 1971. Case settled. 1999-2000.

New York City Environmental Justice Alliance. *New York City Environmental Justice Alliance, et al. v. Rudolph W. Giuliani, et al.* Filed an affidavit that analyzed the racial and Hispanic distribution of the various community gardens for sale and not-for-sale in New York City in 1999. Case settled. Cited in the 2nd Circuit opinion.

Connecticut Civil Liberties Union, Center for Children's Advocacy, NAACP Legal Defense Fund, and the Puerto Rican Legal Defense and Educational Fund. *Sheff v. O'neil.* Analyzed the changing patterns of school enrollments in the Hartford area for this landmark case. Supplied a series of exhibits used by plaintiffs. 1998.

Connecticut Civil Liberties Union and National Association for the Advancement of Colored People. *NAACP v. Milford.* Analyzed historical housing and segregation patterns in the Milford

region, and provided disparate impact analysis for not providing low income housing as agreed. Case settled. 1997-1998.

Connecticut Civil Liberties Union and Puerto Rican Legal Defense Fund. *Pitts v. Hartford*. Analyzed placement of low-income public housing tenants in wake of destruction of public housing. Case settled. 1997.

American Civil Liberties Foundation of Maryland. *Carmen Thompson, et al. vs. U.S. Department of Housing and Urban Development, et al.* Analysis of various proposed plans for the relocation of public housing tenants throughout the Baltimore metropolitan area. Created a series of maps and analyses. Prepared trial testimony. Consent Decree Entered, April 1996.

Gurian and Bixon; Davis, Polk and Wardwell. *Open Housing Center, Inc. vs. Kings Highway Realty, a Division of Provenz Realty Corp.; Provenz Realty Corp; Diane Provenz; Evelyn Cannon; and Barbara Noonan*. Analyzed real estate "tester" data and apartments that various clients were shown. Imputed racial status of clients by using GIS techniques. Prepared affidavit. Cited in judge's opinion denying summary judgment. 1994-1996.

Westchester Legal Services and Sullivan and Cromwell. *Carol Giddins, et al. v. U.S. Department of Housing and Urban Development, et al.* Analyzed various proposed plans to end racial steering of Section 8 tenants to South West Yonkers. Maps and analyses incorporated into consent decree, and still in use in placing tenants. 1992-1994 and continuing.

Metropolitan Action Institute. Analysis of Housing Segregation Patterns in Yonkers, New York and Starrett City, Brooklyn, 1983-1984. (Materials Used for Testimony of Paul Davidoff.)

Federal Court Jury System Challenges

Andrea Hirsch, *Martinez v. Kelly*. Analyzed effects of peremptory challenges for *habeas corpus* petition. 2nd Circuit. 2006--.

Stem Shapiro Weissberg & Garin. *United States v. Darryl Green, et al.* Analyzed jury selection system for Eastern District of Massachusetts using Census data, local lists and other materials. Filed 7 declarations and testified twice. 2004-2006.

Federal Public Defender, Eastern District of LA, New Orleans, LA *United States v. Torres* Analyzed jury selection system for the Eastern District of Louisiana based upon Census Data and Estimates, as well as filings in the Eastern District. Declaration filed. 2006.

Federal Public Defender, Eastern District of LA, New Orleans, LA *United States v. Caldwell* Analyzed jury selection system for the Eastern District of Louisiana based upon Census Data and Estimates, as well as filings in the Eastern District. Declaration filed. 2006.

Federal Public Defender, Western District of PA, Pittsburgh *United States v. Lawrence Skiba* Analyzed jury selection system for the Pittsburgh Division of the Western District of Pennsylvania based upon Census Data and Estimates, as well as filings in the Western District. Affidavit filed. 2004.

Federal Public Defender, Western District of PA, Pittsburgh *United States v. Minerd* Analyzed jury selection system for the Pittsburgh Division of the Western District of Pennsylvania based upon Census Data and Estimates, as well as filings in the Western District. Affidavit filed. 2002.

Federal Public Defender, Western District of PA, Erie, PA. *United States v. Rudolph Weaver*. Analyzed jury selection system for the Pittsburgh Division of the Western District of Pennsylvania based upon Census Data and Estimates, as well as jury lists and voting. Affidavit Submitted 2001.

Newman Schwartz and Greenberg. *United States v. Albert J. Pirro, Jr.* Filed affidavit that analyzed representation in master jury wheel for White Plains and Foley Square Court Houses in the Southern District using census data with respect to the dilution of Italian Americans likely to be on a jury, if venue changed from White Plains to Foley Square. Venue change motion was denied. 2000.

Polstein, Ferrara, Dwyer and Speed and Stephen P. Scaring. *United States v. Dennis McCall, Trevor Johnson*. Analyzed representation in master jury wheel for White Plains Court House in the Southern District. Filed affidavit, which was cited in judge's opinion. 1998.

Curtis, Mallet-Prevost, Colt and Mosle, *United States v. Don King and Don King Productions*. Analyzed representation in master jury wheel for New York City Courthouse in the Southern District. Affidavit and Consulting. 1997-1998.

Dominick Porco. *United States v. Kevin Veale*. Analyzed representation in master jury wheel for White Plains Court House in the Southern District. Filed affidavit. 1997.

Diarmuid White, *United States v. Jose Reyes, et al.* Analyzed representation in master jury wheel for New York City Courthouse in the Southern District. Report and testimony in case cited in the judge's opinion. 1996.

State Court Jury System Challenges

New Hampshire Public Defender, *New Hampshire v. Addison* (Declaration, Deposition and Testimony, 2008; Hillsborough County, New Hampshire, North Division, Superior Court.)

Public Defenders Office, *Commonwealth of Virginia vs. Portilla-Chicas*. Analyzed Jury Selection in Stafford County, VA. (Affidavit) 2006.

Virginia Indigent Defense Commission, *Commonwealth of Virginia vs. Rogers*. Analyzed Jury Selection in Stafford County, VA. (Report and Testimony), 2006.

Criminal Legal Clinic of Syracuse University Law School, *People v. Tyisha Taylor*. Analyzed Jury Selection System for Syracuse and Onondaga County, New York. Testimony, 2005.

Capital Defenders Office, *New York State v. Sweat*. Analyzed representation in jury selection in Broome County, New York. Two affidavits filed, one relating to factors likely to lead to underrepresentation of African Americans in Jury Pool, another related to the operation of the allocation of jurors among courts in Broome County. (Capital Murder Case.) 2003

Michael J. Spiegel, *New York State v. Dennis Salvador Alvarez-Hernandez*, Analyzed representation in jury selection in Westchester County, New York. Analysis based upon census data and estimates, and an emulation of the reported jury selection process using voter lists and other sources. Filed affidavit reporting results. (Capital murder case.) 2001–2003

Capital Defenders Office, *New York State v. Taylor*. Analyzed representation in jury selection in Queens County, New York. Analysis based upon census data and estimates, and an emulation of the reported jury selection process using voter lists and other sources. Filed affidavit reporting results; testified at hearing. Produced demographic analyses by town to assist in jury selection. Testified in 2002. (Capital murder case.) 2000-2002

Mann and Mitchell, *State of Rhode Island vs. David Tremblay*. Analyzed representation in jury selection in Bristol and Providence Counties, Rhode Island. Affidavit filed that includes an analysis of the geographic and racial and Hispanic representation of jurors in the two counties in Rhode Island and includes an estimate of the disparities by race and Hispanic status (Non-capital murder case.) 1999–.

Capital Defenders Office, *New York State v. McCoy*. Analyzed representation in jury selection in Suffolk County, New York. Analysis was based upon census data and estimates, and an emulation of the reported jury selection process using voter lists and other sources. Filed affidavit reporting results. Produced demographic analyses by town to assist in jury selection. (Capital murder case.) 1997-1998.

Reynolds, Caronia and Gianelli. *New York State v. Robert Shulman*. Analyzed representation in jury selection in Suffolk County, New York. Analysis was based upon census data and estimates, and an emulation of the reported jury selection process using voter lists and other sources. Filed affidavit reporting results. (Capital murder case.) 1997. Opinion reproduced in *New York Law Journal*.

Capital Defenders Office, *New York State v. Gordon*. Analyzed representation in jury selection in Queens County, New York. Analysis was based upon census data and estimates, and an emulation of the reported jury selection process using voter lists and other sources. Filed affidavit reporting results. (Capital murder case.) 1997. Opinion reported on and reproduced in *New York Law Journal*.

Capital Defenders Office, *New York State v. Sam Chinn, III*. Analyzed representation in jury selection in Onondaga County. Affidavit filed that presented an analysis of the geographic and racial and Hispanic representation of jurors. It includes an estimate of the disparities by race and Hispanic status. Plea bargain offered and accepted. Discussed at presentation at the New York State Defenders Association, Glen Falls, NY(Capital murder case.) 1997.

Capital Defenders Office, *New York State v. George Bell*. Analyzed representation in jury selection in Queens County, New York. Analysis was based upon census data and estimates, and an emulation of the reported jury selection process using voter lists and other sources. Filed affidavit reporting results. (Capital murder case.) 1996-1997.

Capital Defenders Office, *New York State v. Hale*. Analyzed representation in jury selection in Kings County, New York. Analysis was based upon census data and estimates, and an emulation of the reported jury selection process using voter lists and other sources. Filed affidavit reporting results. (Capital murder case.) 1996-1997.

Employment Discrimination

Shneyer and Shen. *Grimston vs. Marsh and McLanahan*. Analyzed employment patterns based upon Census data and defendant records. Filed expert report and testified in deposition. Case Settled. 1998-2000.

Shneyer and Shen. *Maglasang vs. Beth Israel Medical Center*. Analyzed employment patterns based upon Census data and defendant records. Filed expert report and testified in deposition. Case Settled. 1999-2000.

Shneyer and Shen. *Williams vs. Safesites, Inc.* Analyzed employment patterns based upon Census data and defendant records. Filed expert report. 1998.

Shneyer and Shen. *Lachica vs. Emergency Medical Services*. Analyzed employment patterns based upon Census data and defendant records. Case Settled. Filed expert report. Case Settled. 1996-1997.

Religious Freedom and Tax Discrimination

Rabinowitz, Boudin, Standard and Krinsky, *Garrison v. I.R.S.* Religious Freedom Tax Case, Filed expert report and testified at trial. Analysis based upon a survey of a sample of all synagogues in the United States. 1991-1992. Case settled.

OTHER MAJOR STUDIES OR ANALYSES

Time-Warner Cable of New York. Analyzed and provided maps with underlying ethnic and racial composition for each of the six cable systems managed by Time-Warner Cable in Manhattan, Queens and Brooklyn. 1998-1999. (Proprietary)

New York *Times*. Analyzed circulation patterns of the New York *Times* in connection with their launch of the Boston and Washington editions. 1996-1997. (Proprietary)

Newspaper Association of America. Analysis of Field Experiment of Full-Color Run of the Press Advertisements in Richmond, Virginia. 1992.

Newspaper Advertising Bureau. Analysis of a Panel Study of Change in Newspaper Readership among Young Adults. 1983-1984.

Friends of Vincenza Restiano. Political Consulting, Polling, and Voting Analysis, Computer Based Voter List Organization. 1983, 1985, 1987, and 1991.

Abt Associates, through Center for the Social Sciences, Columbia University. Transfer of Annual Housing Survey Project to Abt. 1982.

Response Analysis Corporation, Princeton, N.J. Problems in Reliability of Longitudinal Household Surveys. 1982.

PROFESSIONAL MEMBERSHIPS AND ACTIVITIES

American Sociological Association: Organizer, sessions on Applied and Evaluation Research, 1998; Organizer, Special Session on New York Trends, 1996; Organizer, sessions on Economy and Society, 1984; Organizer, sessions on Social Change, 1979.

International Sociological Association, Research Liaison Committee on Economy and Society
American Economic Association

Eastern Sociological Society: Vice President 1997-1998; Program Committee, 1991-1992; Co-Chair, Computer Committee, 1985-1987; Presider and Discussant, Women's History Session, 1985; Member, Computer Committee, 1984-1985; Coordinator, Computer Workshops, 1984 Annual Meeting; Co-Chair, Membership Committee, 1983-1984; Member, Papers Committee, 1983-1986; Presider, Historical Sociology Session, 1983; Co-Chair, Papers Committee, 1982-1983; Chair, Membership Committee, 1981-1982; Co-Chair, Conference Committee, 1980-1981.

American Association for Public Opinion Research: Program Committee, 1983-84; Nominating Committee, 1985-1986

New York Chapter, American Association for Public Opinion Research, Associate Program, Chair 2006-07; Program Chair, 2007-08.

Social Science History Association

Population Association of America

CIVIC AND COMMUNITY ACTIVITIES

Yonkers Board of Education, Trustee 1986-1990. President, 1988-1989. Chair, Policy Committee, 1989-1990; Chair, Spelling Bee Committee, 1986-1988.

Yonkers Democratic Party, Second Vice-Chair and District Leader, 1991-1992; District Leader, 1995--

Council of Large City School Districts, 1986-1991. Executive Committee, 1990-1991; Committee on School Choice, 1991; Lobbying Committee, 1989-1990.

New York State School Boards Association, Member Federal Relations Network, 1989-1990.

Longvale Homeowners Association, Board of Directors, 1983-1985. President 1985.

Yonkers Private Industry Council, 1988-1990. Chair, Program and Planning Committee, 1989-1990.

Founding Member and Vice-President, Citizens and Neighbors Organized to Protect Yonkers (CANOPY), 1987-1992.

Volunteer, Friends of Nicholas Wasicsko, 1989, 1991.

Volunteer, Friends of Vincenza Restiano, 1983, 1985, 1987, and 1991.

Volunteer, Friends of Terence Zaleski, 1991.

COURSES TAUGHT

Graduate: (M.A. and Ph.D.) Demography; Computer Applications in the Social Sciences; Advanced Social Statistics; The Sociological Study of Economies; Logic of Social Research; Survey Research Methods; Co-Operative Education Field Placement; Demography; Integrated Social Research; Ph.D. Dissertation and M.A. Thesis Supervision.

Undergraduate: Social Change in the City; Methods of Social Research; Sociology of Economic Life; Third World in Social Change; Social Statistics; Sociological Analysis; New York Area Undergraduate Research Program (at Columbia): "Housing Crisis in New York City" (1980-1981); "Equity of the Criminal Justice System" (1979-1980); "Implementation of No-Fault in New York" (1977-1978).

UNIVERSITY, COLLEGE AND DEPARTMENTAL ACTIVITIES

Research Foundation, Faculty Advisory Committee, 2006-; Board of Directors, 2006-;

CUNY PSC Legislative Committee, 2000—2001; CUNY, University Committee on Research Awards, 1988-1991; CUNY, University Computer Policy Committee, 1986-1987; CUNY/PSC Sociology Research Award Panel, 1986-1987; Graduate Center Sociology Program, Chair, Search Committee, 1989-1990; Methods Subcommittee, 1986-1987; Computers Committee, 1987-1990

Queens College, Committee on Fellowship Leave, 1990-1991; Queens College, Committee on Research and Sponsored Programs, 1982-1986; Ad Hoc Computer Committee, Division of Social

Sciences, 1982-1986, 1994-1996, 1998--; Official Representative to the Inter-University Consortium for Political and Social Research (ICPSR), 1983--

Queens College, Department of Sociology, Chair 2006-- ;Computer Committee, 1981--(Chair most years); Queens College, Departmental M.A. Program Committee, 1981-1987 (Director and Chair, 1982-1987, 2001-2003, 2004-2006)